

**Vermont Family
Network (VFN)**
600 Blair Park Rd.,
Ste. 240
Williston, VT 05495
1-802-876-5315

**Children with Special
Health Needs (CSHN)**
108 Cherry St.,
PO Box 70
Burlington, VT 05402
1-800-660-4427

**UVM Children's
Hospital**
111 Colchester Ave.,
Main Campus,
East Pavilion, Lev. 4
Burlington, VT 05401
1-802-847-8200

**Boston Children's
Hospital (BCH)**
300 Longwood Ave.
Boston, MA 02115
1-617-355-6000

**Vermont Public
Transportation
Association (VPTA)**
160 Benmont Ave.
Ste. 22
Bennington, VT 05201
1-833-387-7200




Travel Guide for Vermont Families Receiving Services from Boston Children's Hospital (BCH)

Page I

What's inside this guide?



	Page
Planning for your child's stay at BCH	2
If you have time for additional planning	2
What about insurance?	3
Medicaid transportation, lodging, food expenses, and reimbursement	4-5
Medicaid Lodging Options booked by VPTA	6
Additional transportation resources	7
Parking	7
What should we pack?	8
Is there an affordable lodging option when my child is a patient?	8
Additional accommodation options	9
Maternal-Fetal Medicine at Brigham and Women's Hospital (BWH)	10
The essentials in Boston: meals, money, mail...	11-12
Additional hospital supports	13
Useful contact information	14
Mission statements	14
How do I talk effectively with my child's doctors and nurses?	14
Map: Finding your way in the neighborhood	15
Map: Rapid Transit map 	16

Planning for your child's stay at BCH

There are many people that you can help you in preparing for an upcoming hospital stay and all the details to be considered.

Some of these people are:

- The medical specialist that referred your child for care at BCH
- The care coordinator at your child's pediatricians' office
- A [CSHN Medical Social Worker](#) (MSW) can offer resources, supports, and help with: **800-660-4427**
 - ♦ CSHN supports Vermont children and youth with special health needs by ensuring comprehensive, culturally sensitive, community-based and family-centered services. This is a free public health program for families.
- A case manager through other agencies: such as the [designated agency](#), [Pediatric Palliative Care](#), [Children's Integrated Services](#) or [Community Health Team](#)
- If your child is on an [IEP \(Individualized Education Plan\)](#) have a conversation with your child's special educator about your child's educational needs during the hospital stay and recovery
- Contact [Vermont Family Network](#) about: **802-876-5315**
 - ♦ [Parent Match/Peer Support](#)- You can be confidentially matched with another parent who has shared similar experiences and/or diagnoses. VFN connects families with other families for caring and support.
 - ♦ [Family Support Funds](#)- Income eligible families of children with special health needs may apply for \$1,200 per fiscal year for respite and /or unmet medically necessary needs such as equipment, medications, travel, and therapies.
 - ♦ [Care Notebook](#)- a place to record all information regarding your child's medical happenings.
- [FMLA \(Family Medical Leave Act\)](#)- allows employees 12 weeks of unpaid time off from work to care for an immediate family member that has a serious health condition, without jeopardizing employment status. The Department of Labor can provide more information.



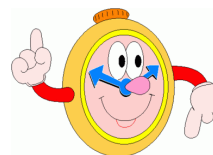
If you have time for additional planning...

It would be helpful for you to call a meeting with your child's care team. Having everyone in one room to discuss your child's medical care and answer any questions that you have can be very valuable.

* Request one of the care team members to make a connection with the BCH social work department for you.

You should leave this meeting knowing whom you can contact with questions while you are at BCH.

You will be given a packet of information once you get to the hospital. This will include BCH contacts, hospital logistics, and surrounding area attractions and eateries.



What about insurance?

Private Insurance

If you have private insurance, call the number on the back of your child's insurance card to ask any medical coverage questions. Ask if your child would qualify for one of their nurse case managers. This person will be an important contact with coverage questions or if issues come up. Be sure to ask if your insurance includes coverage for mileage and lodging.



Vermont Medicaid Insurance

A Medical Social Worker can help you start or complete an application to determine eligibility for Medicaid. A child may receive Medicaid insurance based on either income or disability.

- ♦ **Dr. Dynasaur** is determined based on household income and applied for through Vermont Health Connect.
- ♦ **Disabled Children's Home Care (DCHC)** is a Green Mountain Care Program that allows certain children under the age of 19 who have long term disabilities, or complex medical needs that require a high level of care, to become eligible for Medicaid even though their family's income is above the eligibility level for Dr. Dynasaur. Only the child's income and resources are used to determine financial eligibility - not the family income. You can apply at any time of the year.

Go to the Department of Vermont Health Access [DVHA Access/Medicaid/MABD](#) website and read about MABD Medicaid for the Blind and Disabled. You can download the 205ALLMED Non-LTC document for instructions. You can start the application online at [my.vermont.gov/](#) and set up an account and password.

You can begin the DCHC application before your child's birth and bring it with you to BCH to finish after your child is born. You can include medical documentation such as reports from surgeons and specialists. You can also send a copy of the hospital discharge summary but get the application in as soon as possible.

- ♦ **Health Insurance Premium Program (HIPP)** is a Medicaid program administered by the DVHA that may reimburse some or all of an enrollee's share of employer sponsored group health insurance premiums. There must be at least one member in the household eligible for Medicaid/Dr. Dynasaur and it must be determined to be cost effective for DVHA to do so. Enrollment in HIPP is not an entitlement. If DVHA determines that enrollment of the person in the group health plan is cost-effective, the person must enroll in the group health plan. An individual can also request for a cost-effective test. HIPP will reimburse a person for their share of the cost of the health insurance premiums or a portion thereof depending on the DVHA cost effectiveness evaluation.

Contact AHS.DVHACOBHIPP@vermont.gov to see if eligible.



If your child's BCH admission is an emergency, contact your child's primary care physician and have them fax a [Physician Referral form](#) to Department of Vermont Health Access (DVHA) at **802-879-5919** as soon as possible.
-See page 4 for more details.

Medicaid transportation, lodging, & food expenses

In addition to insurance coverage, when pre-approved, Medicaid may help with some travel expenses to and from Boston such as: mileage reimbursement, meal expenses, parking, tolls, and lodging.

- Medicaid will provide rides to Medicaid-billable appointments for eligible members only when there is no other means of transportation available. Members are eligible for the least costly, medically appropriate means of travel. Whether this is in-state or out-of-state.

Your child's primary doctor or referring specialist has to fill out the [Physician Referral Form](#) and send it to Department of Vermont Health Access (DVHA) for prior approval **at least TWO weeks before** your child's appointment. This form is used for outpatient office visits and inpatient hospital stays.

- On the [Physician Referral Form](#), the doctor will need to check **Yes** ☒ if lodging is necessary. Medicaid generally pays for overnight (least costly, medically appropriate) lodging for appointments before 10am. If your child is admitted one parent is expected to stay bedside. If both parents are medically required to be there, DVHA's Medical Director will need to review a letter of medical necessity outlining this request. This request has to come from the referring provider and should be included with the physical referral form.



As BCH is an out-of-state hospital and is not a Medicaid in-network hospital, the request process requires extra steps. First, call [Vermont Public Transportation Association](#) (VPTA) to discuss your pre-approved upcoming travel and complete the requested forms. VPTA will explain the transportation reimbursement process from there. Your child's primary doctor or referring specialist has to fill out the Physician Referral Form and send it to Department of Vermont Health Access

(DVHA) for prior approval at least TWO weeks before your child's appointment. This form is used for outpatient office visits and inpatient hospital stays. If your appointment is scheduled less than two weeks contact DVHA to discuss the best way to proceed. **833-387-7200**

- It is recommended that you follow up with your child's doctor to confirm the Physician Referral Form has been submitted to DVHA. Your child's BCH transportation request cannot be approved until DVHA has received and approved this form.



- Once the Physician Referral Form has been approved VPTA will contact you about your trip and provide you with the details of your stay. VPTA provides you with the necessary forms for your reimbursement, hotel confirmation details, and an out-of-area transportation approval form that requires your signature or email confirmation before leaving on your trip.



- If you do not have a car, your car is not operating, your partner needs the only car, or you have any Medicaid Transportation questions you need to contact VPTA and complete the Medicaid vehicle exception request form.



info@vptaride.org
833-387-7200

If approved for reimbursement:

- Save all itemized receipts and other trip-associated costs such as tolls and parking.
- You and your child (with prior approval) may receive reimbursement for meal expenses during your stay at BCH. See chart below:
- Mileage Reimbursement- Medicaid will reimburse members using their own vehicle for medical trips totaling more than 50 miles per week or more than 215 miles per month.
- Meal Reimbursement: DVHA will not reimburse for any gratuity.

Meal reimbursement rates per person:
**Reimbursement only applicable for overnight stays.

Per Meal	Out-of-State	
Breakfast	\$6.25	You must leave home before 5:30 am
Lunch	\$7.25	
Dinner	\$18.50	Returning home after 6:30 pm only

How to be reimbursed for travel expenses...

IMPORTANT

You are responsible for completing the mileage form and keeping copies of your itemized receipts for all pre-approved expenses as outlined in your out-of-area approval form. These expenses may include lodging, meals, mileage, parking, and tolls. For expedited reimbursement, please return your original itemized receipts within 15 days. If receipts are not received within 30 days after discharge you will not receive reimbursement.



- Medicaid will only reimburse a food receipt that is itemized.
- You will not be reimbursed from a receipt that only states the total amount of the meal.
- You will not be reimbursed for grocery store or convenience store purchases.
- Detailed information about the [Non-Emergency Medical Transportation \(NEMT\)](#) program can be found at DVHA.

Medicaid Lodging Options booked by VPTA

Medicaid will cover your lodging costs as long as you have active coverage and Medicaid is either primary or secondary insurance. Contact VPTA as soon as you know of your scheduled appointment so lodging arrangements can be made: M-F 7:45am - 4:30pm.

833-387-7200 or at info@vptaride.org

VPTA will look into the most economical, medically appropriate lodging available and they will book your room. If you book your own lodging you will not be eligible for lodging and meal reimbursement.

When your child has an appointment at BCH, VPTA will start with the patient family housing options listed below:

Parent Sleep Spaces, Farley 5 and 6

[Hale Family Center for Families](#)

No charge, reservations required, limited availability/ 26 spaces.

617-355-6279

The hospital provides accommodations in the Medical/Surgical Intensive Care Unit (MICU), Newborn Intensive Care Unit (NICU), and Cardiac Intensive Care Unit (CICU) for one parent in each patient's room, which is usually a fold down chair or a bed built into an alcove, linens are provided. Communal kitchen and laundry facilities are available.

- Shower facilities are available on each inpatient unit except for the ICUs.
- Your child's nurse can direct you to the nearest shower facility.



[BCH Patient and Family Housing](#)

Application required in-advance, online

\$30 a night

617-919-3450

Within walking distance of BCH are two wheelchair accessible housing options for any family member or support person of a patient. There is a communal kitchen, living rooms, bathrooms, linens and towels supplied, free wifi and free laundry facilities. A breast pump is available for nursing mothers. There is a free shuttle bus that runs between the housing and BCH.

The Yawkey Family Inn

241 Kent Street

Brookline, MA 02446

The Devon Nicole House

21 Autumn Street, 5th Floor

Boston, MA 02215

[Ronald McDonald House](#)

229 Kent Street, Brookline, MA 02446

\$10/night or \$200/month

617-398-6458

Accommodation for families and pediatric patients who are critically ill. Patients must be under 21 year's old, receiving treatment for cancer or other life-threatening hematological diseases and must live more than 30 miles outside of Boston.

[Hospitality Homes Program](#)

Free but there is a \$25 cancellation fee

*Application plus two references required

888-595-4678

Temporary housing in private volunteer host homes and other donated accommodations for families and friends of patients.

Additional transportation resources



Rapid Transit (MBTA or the T)

621-222-3200

To get to BCH, take the D or E Green Line to Longwood. Follow Longwood Avenue to BCH.
→ See Rapid Transit map, back of booklet.

Angel Flight NE

800-549-9980

Angel Flight arranges free flights for those requiring access to medical care.

Patient Airlift Services (PALS)

631-694-PALS(7257)

Volunteer medical flights and free air transportation.

Parking



BCH is Located at: the corner of Longwood Ave and Blackfan St. across from Bertucci's Restaurant. [BCH webpage with directions.](#)
Expect congested traffic between 7-9am and 4-6pm; leave extra time for travel and parking.

Parking tickets can be validated at the BCH Main Lobby reception desk or Emergency Services (for emergency patients only). A limited number of clinics have validators located in their reception areas.

Discounted parking rates: validated parking available for maximum fee of \$10 for up to 24 hrs. for parents.

Family Extended Stay Parking: \$60 week-long card can be purchased at the BCH parking office (\$10 discount). The parking pass allows you to come and go as needed during that period without having to stop at the cashier station.

Medicaid will reimburse for parking at the approved lodging site along with any hospital parking as long as there is an itemized receipt.

DVHA will not reimburse for valet parking.

Take Note:

If the Patient Family Garage is full, ask the BCH reception desk about alternative parking. **Also**, if you have a mid-size SUV with a Thule or carrier on top it will not fit in the garage. You can park in valet or park in an alternative location.

BCH valet services

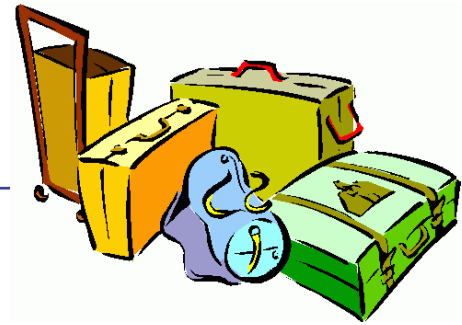
For \$5 plus the normal garage fee, there is 24 hour valet parking available at the main entrance of the hospital.



The \$5 fee is waived for vehicles with a handicap placard but you must pay the normal garage fee.

*DVHA will not reimburse for valet parking.

What should we pack?



- Laundry detergent (pods are very easy to travel with). Detergent is not sold in hospital and is expensive at the CVS
- Tide-to-Go Instant Stain Remover in case you need to do a quick wash of something in your room
- Comfortable clothes
- Sneakers
- Slippers/slip on shoes to wear in the room; great when you need to get up quick
- Warm clothes (ICU can be cold)
- A sleeping pad
- Bring your [VFN Care Notebook](#) or a note book to write down any questions you have for the doctors/nurses and to record your child's medical visit details
- Baby wipes- some hospital floors use dry pads that you have to wet with water. If you prefer wipes then it would be best to bring a package with you
- Your child's favorite items
- Cash and quarters for parking, interstate toll, and laundry
- Snacks
- Activities for the caregiver: book, knitting, crosswords etc.
- [Hale Family Center for Families](#) offers hospitality services and helps meet communication needs. They also have Wellness offerings for things like massage, yoga and Zumba classes and art workshops.



How to reduce some of that travel stress

- ◇ Plan your travel course ahead of time.
- ◇ Program your GPS with your travel destination address.
- ◇ And/or, bring a map to use for reference while traveling.
- ◇ Keep cash ready for upcoming toll booths.

Additional accommodation options

The hospital will supply a list of [Patient Resources list](#) for area hotels, inns, bed and breakfasts, and short-term housing. 617-919-3450
familyhousing@childrens.harvard.edu

*Ask for patient rate/BCH discount when booking. If needed, ask your Medical Social Worker for a letter of verification of patient status.
[Hotel List from BCH.](#)



Hotels:

[Inn at Longwood Medical](#)

0.01 mi. to BCH
 342 Longwood Avenue, Boston, MA 02115
 617-731-4700 Parking \$18.00
 Fridge and microwave available

[enVision Hotel](#)

0.9 miles to BCH
 81 South Huntington Avenue
 Boston, MA, 02130
 617-383-5229
 Fridge and microwave in room
 Pet Friendly. \$25 parking per night

[Homewood Suites by Hilton](#) Boston/Brookline

1.9 miles to BCH
 111 Boylston St, Brookline
 617-232-1487
 Use client ID (0002784134) at reservation.
 Full kitchen, free breakfast
 Valet parking only \$35/night

[Courtyard by Marriott Boston Brookline](#)

1 mile to HCH
 40 Webster Street, Brookline, MA 02446
 617-734-1393
 Fridge and microwave available
 Overnight parking \$15.00, free shuttle

[Hampton Inn Boston Crosstown](#)

1.5 miles to BCH
 811 Massachusetts Ave
 Boston, MA 02118
 \$12 Parking, Shuttle to BCH and airport
 617-445-6400

[Liberty Hotel](#)

2.5 miles to BCH
 215 Charles St, Boston, MA 02114
 617-224-4000

[Residence Inn by Marriott Boston Back Bay](#)

125 Brookline Ave
 Boston, MA 02215
 617-236-8787
 Free breakfast, fitness center, pool

[Four Seasons Hotel](#)

2.79 miles to BCH
 200 Boylston Street, Boston, MA 02118
 617-338-4400
 Fridge and microwave available
 Overnight parking \$41.00 per day,
 complimentary drop off car service

Long Term Housing:

[Church Hill Company](#)- Rental Apartments
 866-255-0593

[Homewood Suites by Hilton](#)

(See details in Hotels)

[Residence Inn Boston Back Bay](#)

(See details in Hotels)

[Residence Inn Boston Downtown/South End](#)

1.6 miles from BCH
 2001 Washington Street, Roxbury, MA 02119
 857-776-3000
 Free breakfast, kitchenette, parking \$40/
 night

Ask the hotel if they provide a free shuttle to the hospital.

Maternal-Fetal Medicine at Brigham and Women's Hospital (BWH)

Some expecting mothers travel to BCH for fetal intervention or for the care of their baby immediately following delivery. Whether the transfer of mother's care is temporary or for the duration of the pregnancy, providers specialize in the care and delivery of high risk pregnancies and they partner with BCH for fetal interventions.

BWH Registration: 855-278-8009

Preregistration is required before a transfer to BWH. They will provide a registration number for when you make an appointment.

Scheduling Appointments: 855-278-8009

Be prepared to provide your registration number.

Birthing Support/Doula:

BCH and BWH do not provide Doulas. There are local Doulas willing to travel to provide birthing support.

[Birthing Gently](#) 978-314-5533

[Rising Tide](#) 774-207-7124

Driving to BWH:

75 Francis Street, Boston, MA
Valet parking available at main entrance or patient parking at 70 Francis Street, Boston, MA.

Walking from Advanced Fetal Care Center (AFCC) at BCH to BWH:

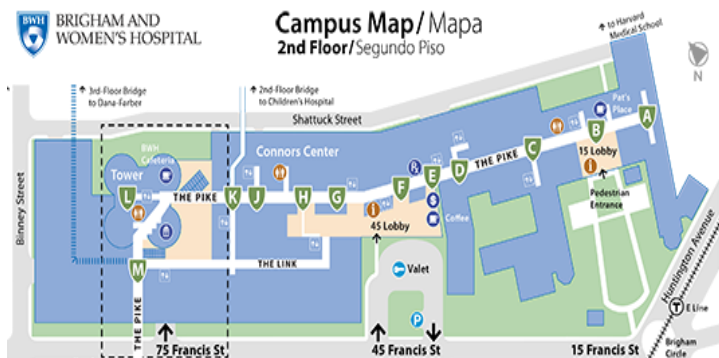
Turn right out of AFCC, follow hall, enter the sliding doors to the indoor bridge. Cross to the bridge which enters into 2nd Floor of BWH.

Locations within BWH from bridge:

To Maternal-Fetal Medicine, turn left on the Pike, take elevator on left to 3rd floor.

To OB admitting, turn right on the Pike, take stairs to ground floor. Admitting is past escalator on right.

To Triage/Labor and Delivery, turn left on the Pike, take elevators on left to 1st floor. Ask security to release elevator to 5th floor.



Lactation Supports:

Throughout the hospital lactation rooms and breast pumps are available, inquire at the check-in desk. All pumps are hospital grade. Lactation consultants are ready to support nursing moms. Ask your child's nurse or social worker to make an appointment.

There potentially is a wait for the breast pump, you can arrange for a personal pump to cut down any wait time. The starter kit which has all new tubing and the essentials will cost \$50. A lactation vending machine is located outside of Au Bon Pain next to the elevators.



The essentials in Boston: meals, money, mail...

The hospital offers many dining options. Meal vouchers are available for purchase from the cafeteria, allowing you to order food from the menu in your child's room. Call 5food to order. Nursing mothers receive three free meal vouchers a day.



Restaurants in the hospital:

Children's Hospital Cafeteria-Fresh Food

Court: Farley Basement, BCH

Hours:

Monday-Friday: 6:30am-8:00pm

Weekends/Holidays: 6:30am-7:00pm

Au Bon Pain The Bakery Cafe

Main Lobby, BCH

Hours: Sunday-Thursday, 24 hours a day

Saturday and Sunday, closes at 11pm

Restaurants connected to hospital:

Longwood Galleria Food Court

350 Longwood Avenue, Boston, MA

McDonald's, Subway, Dunkin Donuts,

Beantown Burrito, Charleys Philly Steaks,

Heidis House of Coffee, Bourbon Street

Café, plus a few more

Continued- Restaurants within walking distance:

Longwood Grill at Inn at Longwood Medical

617-232-9770

342 Longwood Avenue, Boston, MA

American cuisine

B. Good

617-879-9960

360 Longwood Ave, Boston, MA

Kale and Grain bowls, salads, sandwiches

Starbucks

In BCH **617-355-5539**

or at 283 Longwood Avenue **617-277-5202**

Coffee, baked goods and sandwiches

TGI Fridays

617-734-1047

1626 Tremont Street, Boston, MA

American cuisine

Restaurants within walking distance:

Bon Me

Longwood Medical Area

431 Brookline Ave Boston, MA

617-602-2658

Asian Fusion

Bruegger's Bagels

(617) 731-8993

375 Longwood Avenue, Boston, MA

Bagels, sandwiches, salads, and coffee

Chutneys Longwood

617-264-2100

350 Longwood Ave, Boston, MA

Indian Food

JP Licks

617-566-6676

1618 Tremont Street, Boston, MA

Homemade ice cream and frozen yogurt

Banking ATMs:

Located at 1st floor BCH,

near Fegan elevators:

Bank of America ATM

Citizens Bank ATM



Area Attractions:

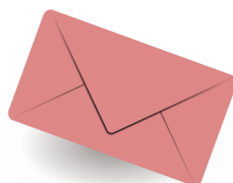
- Museums
- Parks and Recreation
- Sports Facilities
- Aquarium
- Freedom Trail
- Library
- Faneuil Hall
- Franklin Park Zoo

The essentials in Boston- continued

Postal Service:

UPS Store

617-738-3372
423 Brookline Avenue,
Boston



US Post Office (near Brigham Circle)
1575 Tremont Street, Boston

Grocery Stores:

Stop and Shop (Brigham Circle)

617-232-3572
1620 Tremont Street, Boston



Trader Joe's

617-278-9997
1317 Beacon Street, Brookline, MA

Target

617-991-8262
1341 Boylston Street, Boston, MA

Whole Foods

413 Centre Street
Jamaica Plain, MA
617-553-5400

Pharmacy:

CVS (Pharmacy only)
1st floor of BCH
617-975-3500



CVS

617-731-5753
350 Longwood Avenue, Boston, MA

Walgreens

617-232-7506
429 Brookline Avenue, Boston, MA

Rapid Transit (MBTA or the T)

621-222-3200

To get to BCH, take the D or E Green Line to Longwood. Follow Longwood Avenue to BCH.
—> See Rapid Transit map, last page.

800-549-9980

Where can I send a fax or find a computer to access my e-mail?

Hale Family Center for Families is located in the Farley building, room 111.

Here you will find access to:

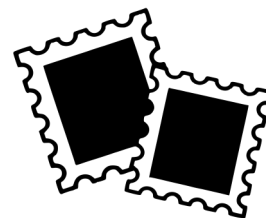
- Computers and Printers
- Copy/Fax machine
- Video phone
- Library



Is there someplace where I can buy stamps or cash a check?

There is a cashier (located in Farley building, across the hall from the Hale Family Center for Families room 111) who sells stamps and cashes traveler's checks, money orders, personal checks up to \$25.00.

Hours:
Monday-Friday,
8am to 4:30pm
857-218-3434



Additional hospital supports

Child Life Specialists

617-355-6551

You can ask for a Child Life Specialist if one has not visited your child during your stay. Their purpose is to:

- Help patients develop ways to cope with fear, anxiety, separation and adjustment to the hospital experience giving special consideration to each child's family, culture, and stage of development.
- Provide consultation to the health care team regarding developmental and psycho-social issues
- Provide preparation and individualized support before and after medical procedures
- Facilitate developmentally appropriate play, including medical play, at the bedside, in activity rooms and in clinic areas
- Initiate tutoring services



Visitor Information

Visiting Hours, Mail and Postage & Security Escort 24 hour availability.

617-355-7455

Within 15 minutes, a patient and family can be escorted by a security officer within certain areas of the hospital. Friends and relatives may visit everyday between 12pm and 8pm. Parents and guardians are allowed to visit after 8pm. One parent or guardian may stay in the hospital 24 hours a day.



Spiritual Care

617-355-6363

Chaplains are in the hospital every day from 8am-5 pm and available after hours for emergencies. Ask your nurse for this service.

Interfaith Chapel, Farley 106

617-355-8095

Page a chaplain 617-355-6363

A peaceful interfaith chapel welcome to you and your family to use for your own prayers or meditation. Rosaries, electric Sabbath candles, prayer rugs and cushions, and scriptures in many languages are available upon request. Schedule of services is posted at the entrance.

The chapel hosts regular weekly observances and services on special religious holidays. These include Catholic mass, Sabbath candle-lightings, and Buddhist meditation. The Muslim chaplain can provide directions to local institutions for Friday prayer, Ramadan, and other holy days.

Is there a location to do my laundry at BCH?

Coin operated laundry is located on the 1st Floor of the Farley Building.



Useful contact information

Vermont Family Network (VFN)
Williston, VT
1-802-876-5315

CSHN Main Office Number
Burlington, VT
1-800-660-4427

UVM Children's Hospital
Burlington, VT
1-802-847-8200

Boston Children's Hospital (BCH)
300 Longwood Avenue, Boston, MA 02115
1-617-355-6000

Hale Family Center for Families- Patient Relations: for any questions about your child's care, hospital policies, and procedures.
1-617-355-6279

Vermont Public Transportation Association (VPTA)
Bennington, VT
1-833-387-7200

Mission statements:



VFN's mission is to empower and support all Vermont children, youth, and families, especially those with disabilities or special health needs. We do this by giving a strong start, lifting family voices, and advancing inclusive communities.

CSHN is a public health program for families, health care providers and communities. Supporting Vermont children and youth with special health needs by ensuring comprehensive, community-based and family-centered services.

BCH Provides the highest quality health care. Be the leading source of research and discovery. Educate the next generation of leaders in child health. Enhance the health and well-being of the children and families in our local community.

VPTA's mission is to improve mobility of people in Vermont by increasing awareness of public transportation benefits and needs through education and advocacy.

UVM Children's Hospital's mission is to improve the health of the people in the communities we serve by integrating patient care, education, and research in a caring environment.



How do I talk effectively with my child's doctors and nurses?

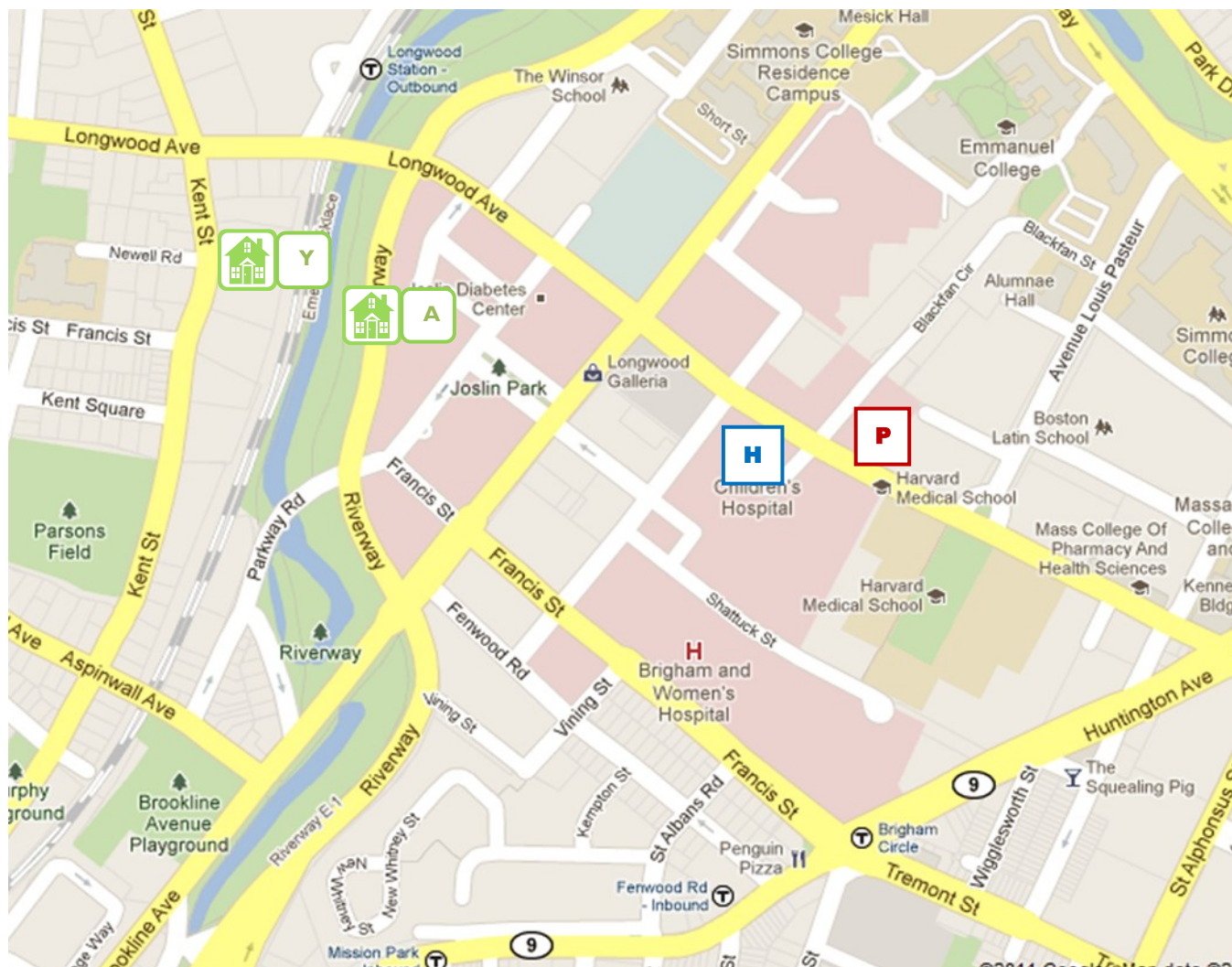


Some helpful resources are:


Effective Communication in Children's Hospitals, Blackstone, S. and Pressmen, H. - A Handbook of Resources for Parents, Patients, and Practitioners

Talking with Your Child's Doctor, Dowshen MD, S. - Information on how to maximize your time with your child's doctor.

Finding your way in the neighborhood




 Boston Children's Hospital
300 Longwood Ave., Boston

 The House at 21 Autumn St.

 Children's Hospital Parking
The corner of Longwood Ave.
& Blackfan St.

 Yawkey Family Inn
241 Kent St.

 Subway stop (MBTA or the T)

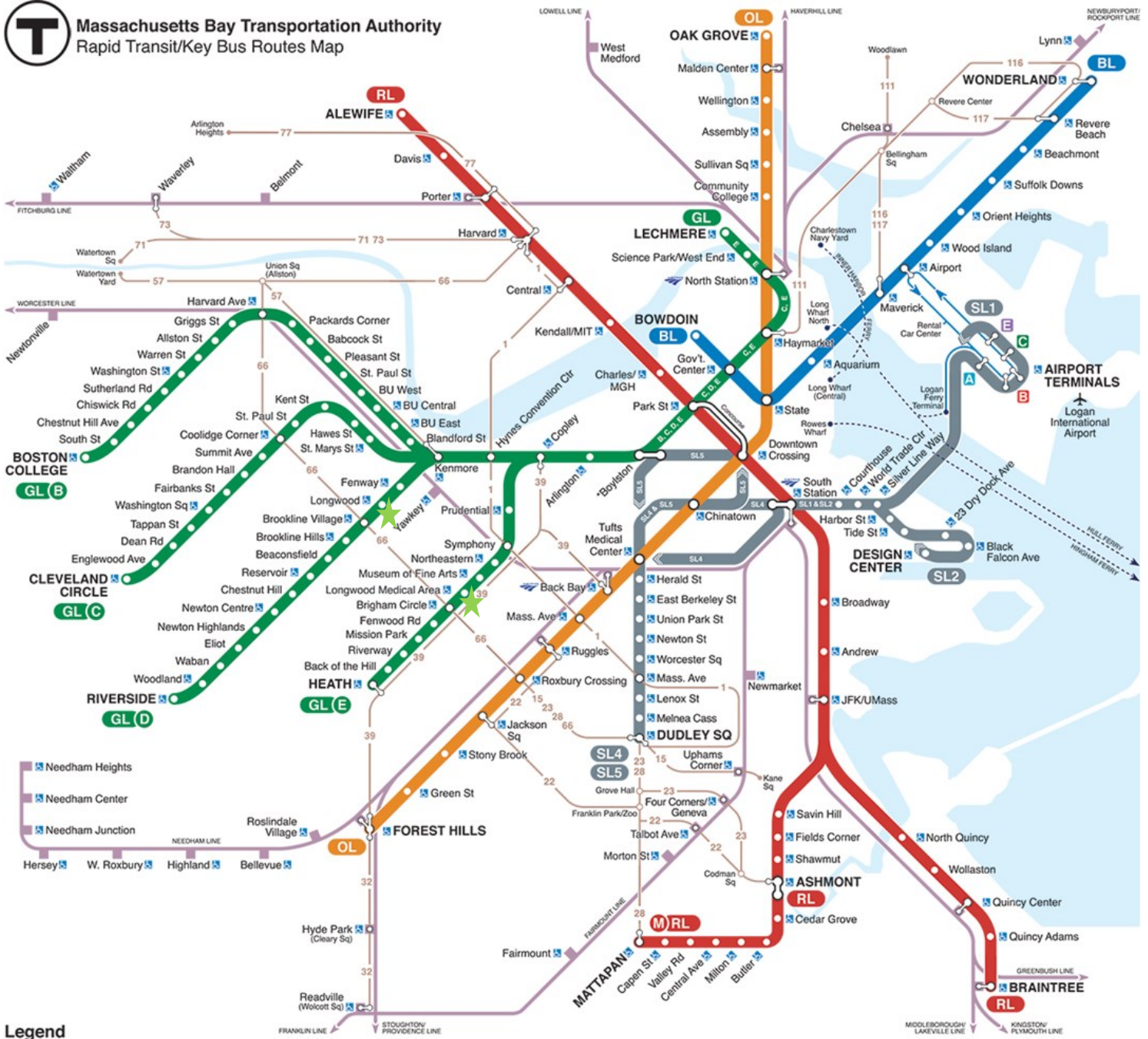


Tear off this last page, keep these maps handy during your travels for easy reference.

Be ready for your travels with cash and quarters on hand for: parking, tolls, subway/bus fare.



Massachusetts Bay Transportation Authority Rapid Transit/Key Bus Routes Map



Legend

- RL** RED LINE
- M** MATTAPAN LINE
- OL** ORANGE LINE
- BL** BLUE LINE
- SL** SILVER LINE and branches
- GL** GREEN LINE and branches
- COMMUTER RAIL**
- KEY BUS ROUTE** Frequent service
- FERRY**
- Accessible station** All MBTA and Massport bus and ferry services are accessible
- Rapid Transit transfer station**
- Commuter Rail transfer station**
- Free Logan Airport shuttle bus**
- Amtrak service** Back Bay, North & South stations
- Customer Communications & Travel Info** 617-222-3200, 800-392-6100, TTY 617-222-5146, www.mbta.com
- MBTA Transit Police: 911** TTY 617-222-1200
- Elevator/escalator/lift updates:** 800-392-6100

© July 2016 v.29

Take D or E Green Line to Longwood ★

Follow Longwood Avenue to BCH.